



ACTIVITY REPORT



A RECORD YEAR

GOVERNANCE

Corepile is a non profit Public Limited Company since 1999 with a corporate capital of 40,000€.
Corepile is the leading Compliance Recycling Organization for portable batteries, under French State approval since 2010.

FINANCIALS

Total 2019 turnover almost reached 12M€ including the e-mobility activity.
For portable batteries, turnover reached 10.3M€ with 9.9M€ expenses distributed as follows:

11.5%

COLLECTION SUPPORT

10%

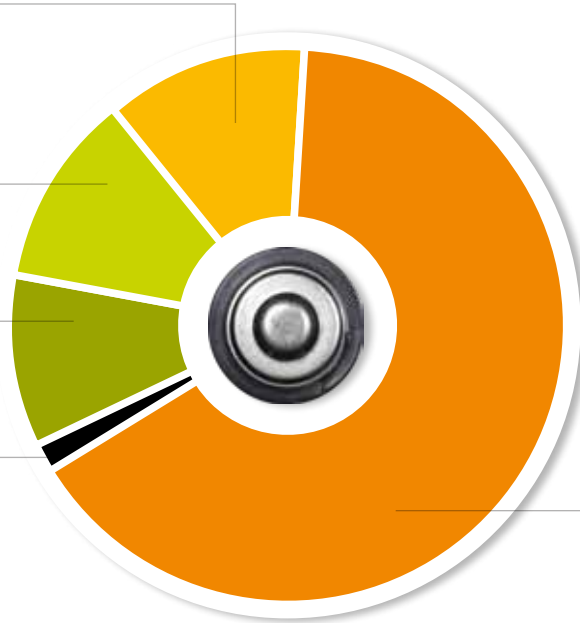
COMMUNICATIONS & PROMOTION

12%

ADMINISTRATIVE COSTS

1.5%

RESEARCH & R&D



1	2	3
4		5
6	7	8

- 1/ ELISABETH ANCELET / President
- 2/ DAVID TURMEL / Director of operations and members
- 3/ FLORENT STUCK / Manager operations and information system
- 4/ FREDERIC HEDOUIN / Chief executive officer
- 5/ CAMILLE JONCOUR / Manager collection networks
- 6/ ALEXIS RIVOLLIER / Project manager
- 7/ JEANNE LEPEINTRE / Director communications and CSR
- 8/ IRCHAAD HOSSEN / Manager external relations and developpement

STAKEHOLDERS & ADMINISTRATORS*

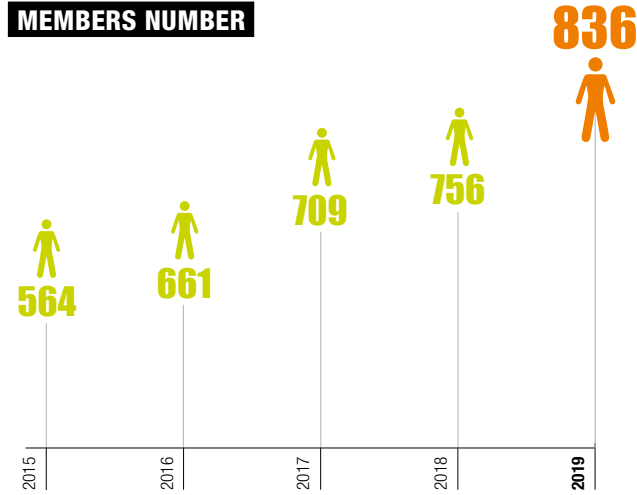
- Carrefour*
- Duracell*
- Energizer*
- GPBM Battery
- SILVE* (Les Mousquetaires group: Intermarché, Bricomarché, Netto...)
- SPAP (French portable battery association linked to EPBA)
- Spectrum Brands* (Varta)

LOGISTICS & OPERATIONS (BATTERIES COLLECTING – SORTING – RECYCLING)

65%

MEMBERSHIP

MEMBERS NUMBER



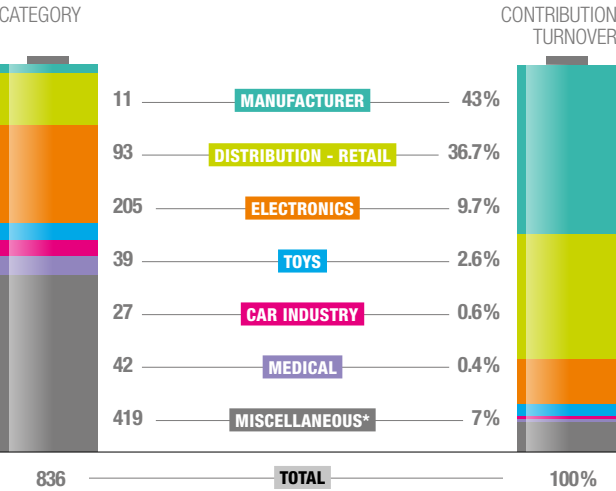
The 25 largest members account for 80% of eco-contributions funding.

PUT ON MARKET

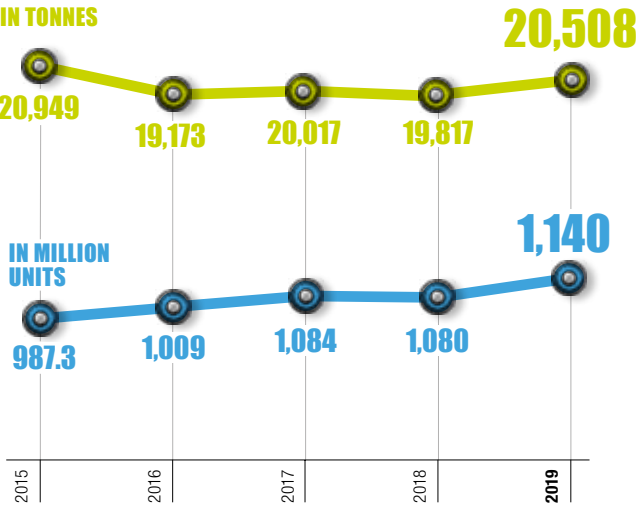
This year “put on market” volume increase by +3.5% in weight and +5.5% in units number.

This confirms the historical trends towards downsizing, lighter chemistries and rechargeable batteries...

DISTRIBUTION OF 2019 MEMBERS BY:



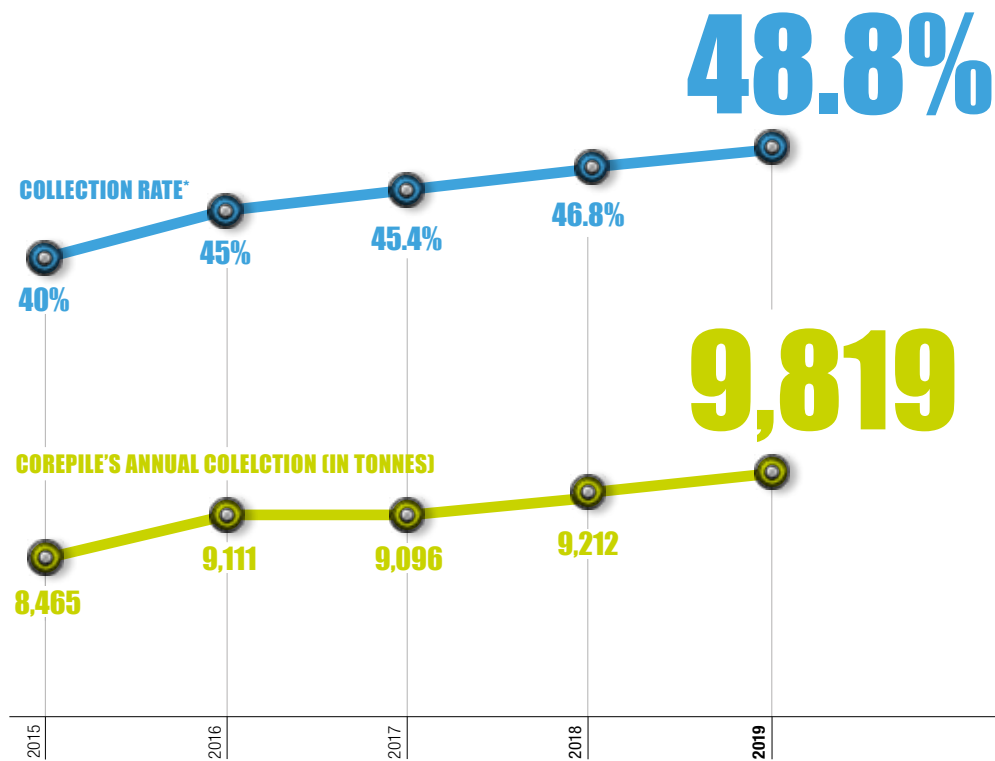
* Jewellery, electronic cigarettes, alarms, watches. Products including batteries manufacturers.



COLLECTION RESULTS

COLLECTION RESULTS AND TRENDS

The 50% collection rate goal for 2021 (end of current State approval) seems more and more achievable (with the caveat of sanitary crisis potential side impacts). This year 2 points growth is mostly due to the dynamics of our direct collection networks such as stores and municipal waste as well as the always more responsible attitude of the French citizens.

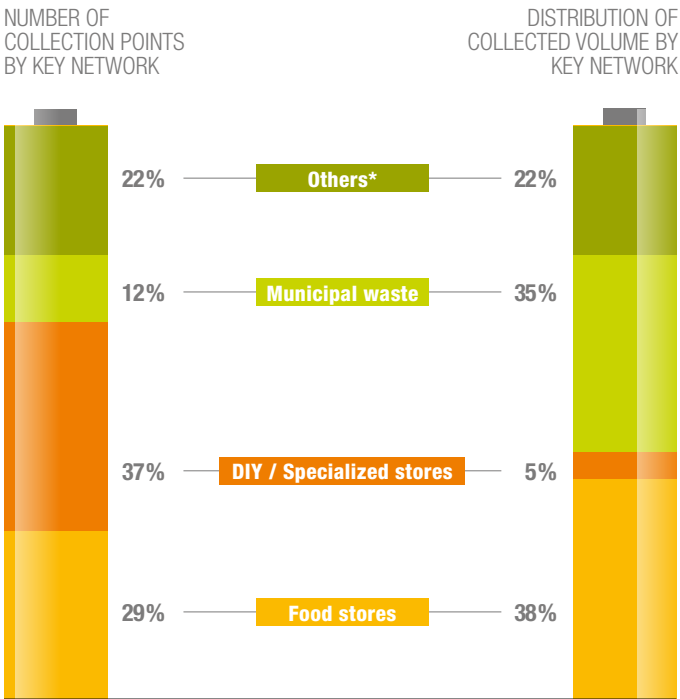


In-store battery collector

+6.5%
IN TONNES

COLLECTION NETWORKS

DISTRIBUTION OF COLLECTED VOLUME BY KEY NETWORK



32,174
COLLECTION POINTS

Out of those more than 32,000 active collection points, 80% are open to the public, over the whole territory. On average 4.8 collection points are closely available for 10,000 inhabitants. The bulk of them are the stores and municipal waste parks but a lot of companies, industries, schools, etc. offer a visible collection for used batteries collection. All of them are registered on our websites for efficient identification. Corepile's collection network is spread efficiently to the public.

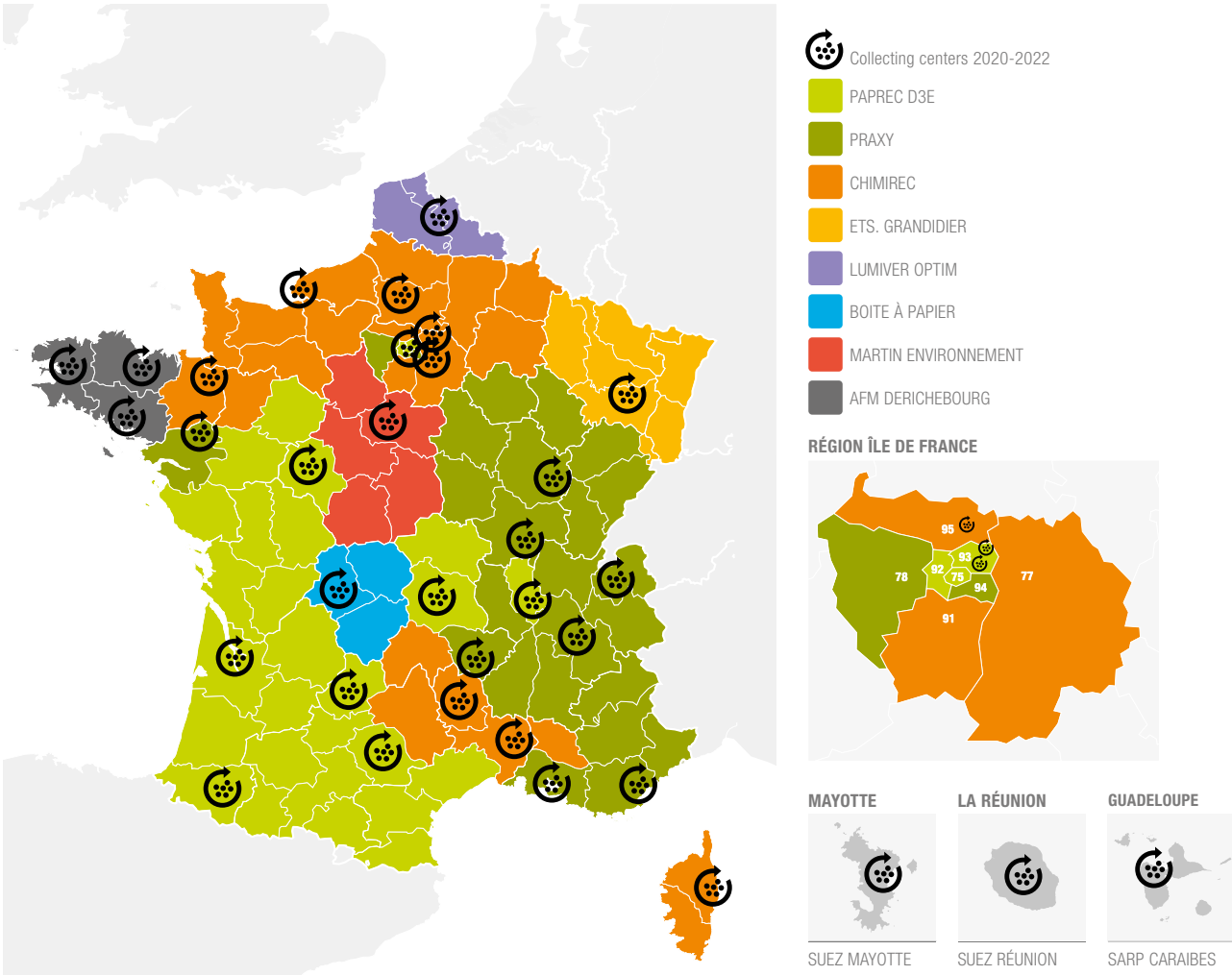


Municipal waste park battery collector

*European directive's calculation methodology = 2019 collection related to the "put on market" average over the past 3 years (2017, 2018 and 2019).

*Others: companies, schools, administrations, hospitals, professional collectors, WEEE dismantlers and small lead batteries...

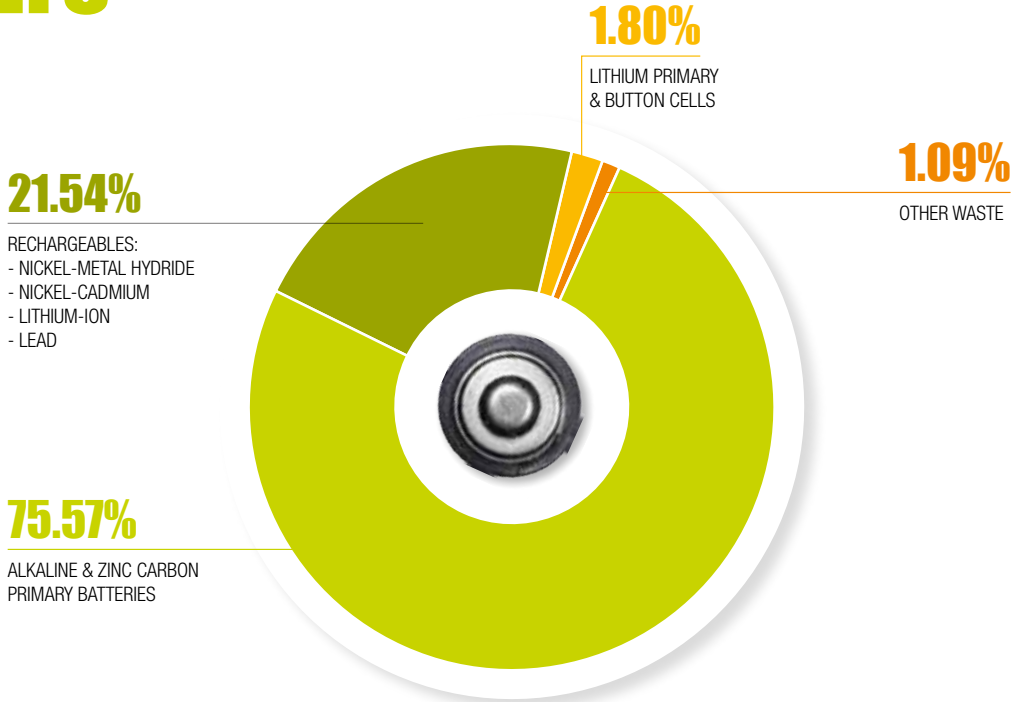
COLLECTING PARTNER COMPANIES



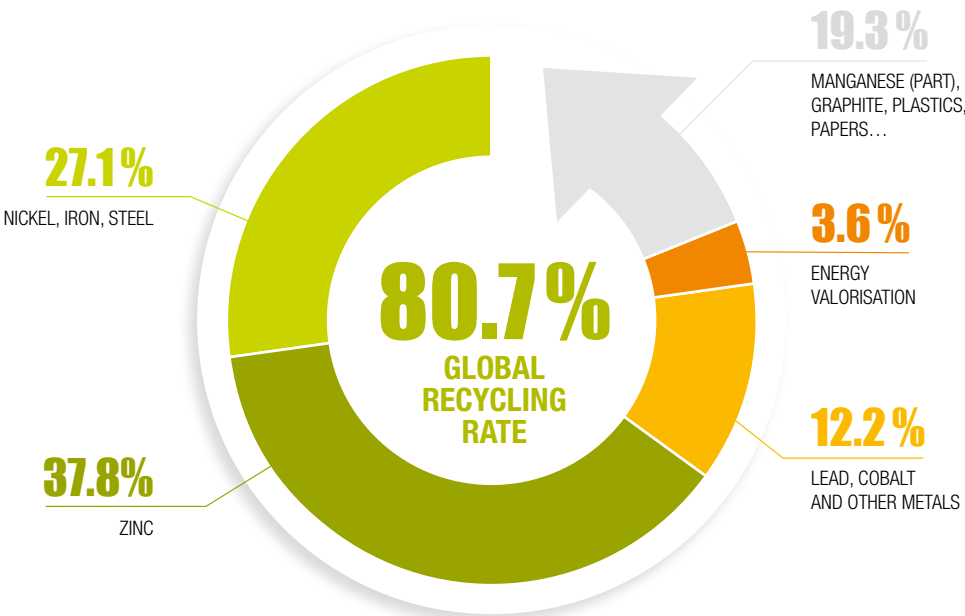
SORTING AND RECYCLING PARTNER COMPANIES



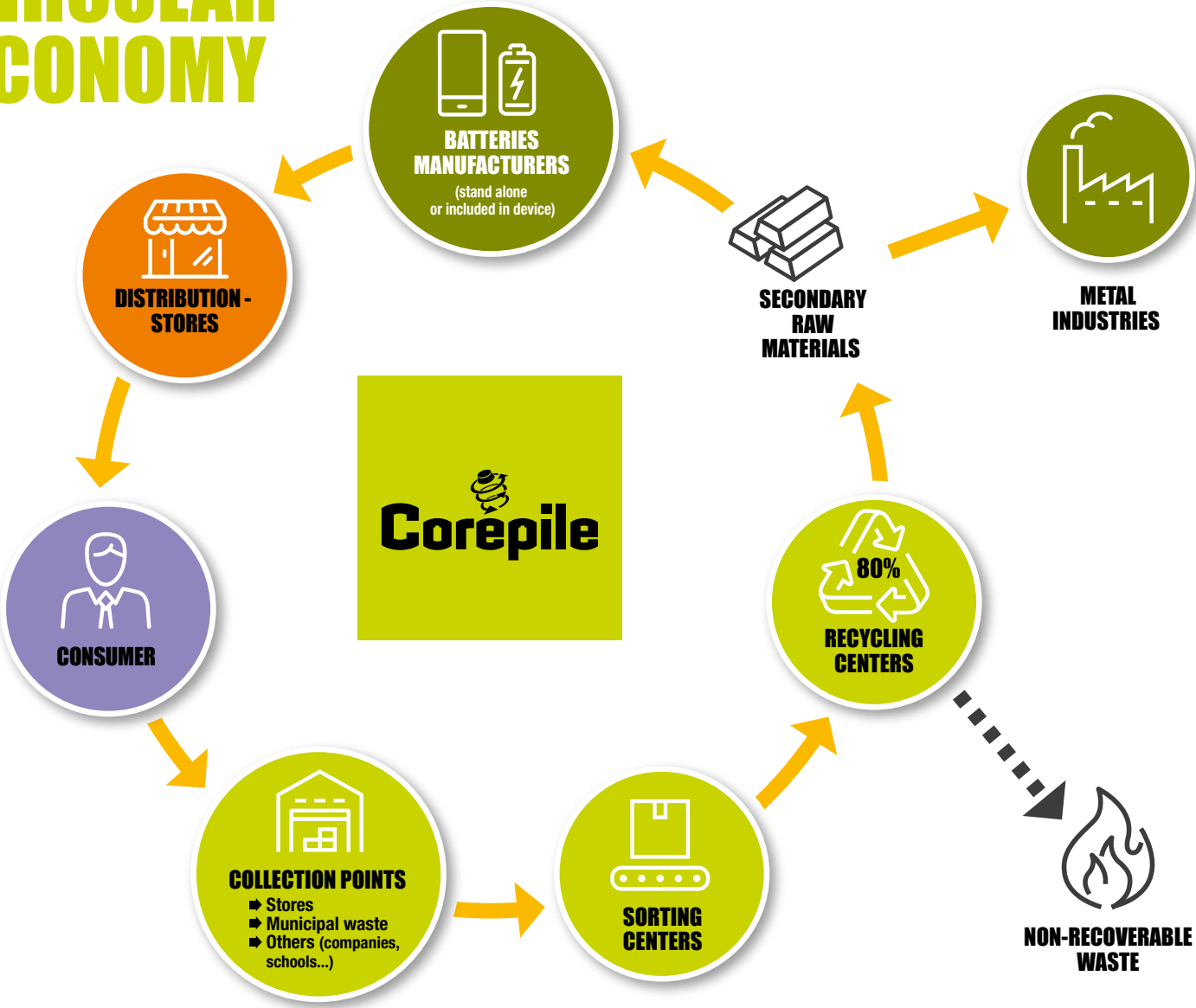
SORTING RESULTS



RECYCLING RATE

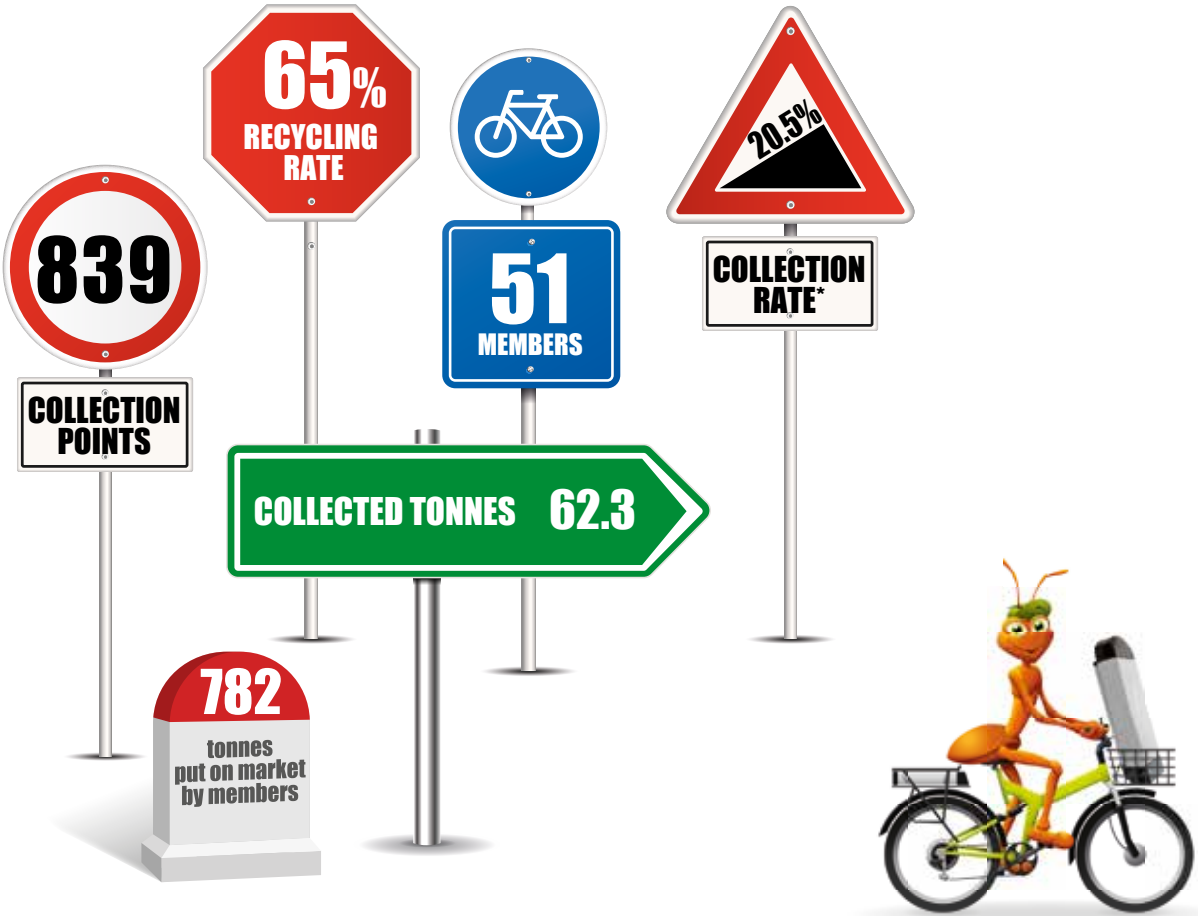


CIRCULAR ECONOMY



As compliance recycling organisation, Corepile is at the center of the battery circular economy loop and interacts with all actors from put on market to recycling plants. A great majority of the constitutive metals will be reused in metallurgical industries to make everyday objects such as bicycles or hardware items.

E-BIKES KEY FIGURES



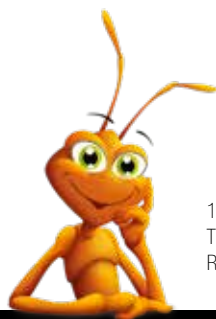
Corepile has been actively present at the Tour de France 2019 fan parks.

Corepile launched in 2018 a collective and voluntary scheme for theses mobility battery categories, typically powering e-Bikes and other Powered Mobility Personal Devices.

*Calculation over 10 years put on market average.



Corepile was partner of ICBR 2019 in Lyon.



17, rue Georges Bizet - 75116 Paris
Tél.: 01 56 90 30 90 – Mail: corepile@corepile.fr
RCS Paris: 422 489 088 000 35 – APE: 7022 Z – S. A. au capital de 40 000 euros

